



Historic Orchards in National Parks

Susan A. Dolan
NPS Park Cultural Landscapes Program Manager
August 2014



More About Our Program

- Home
- Stories
- People
- Places
- Preservation
- Climate Change
- Sustainability

Program Tools

- View Site Map
- FAQs
- Contact Us

Park Cultural Landscapes

News & Announcements



The Park Cultural Landscapes Program has joined the Flickr community, and we want you to join us too! The relationships between the landscape area, its cultural and natural resources, and the historic events or people associated with its significance combine to create a more complete image of the cultural landscape. We invite you to step into this image and into the landscape beyond at our Flickr site. [Read more »](#)

Cultural Landscapes

A cultural landscape is a geographic area, including both cultural and natural resources and the wildlife or domestic animals therein, associated with an historic event, activity, or person, or exhibiting other cultural or aesthetic values. [Read More »](#)



Features



People

Throughout history, people's relationship with the landscape has shaped communities, personal stories, and historic events. Here we highlight people whose significant contributions to the stories shared by the National Park Service included direct links and influence of their surrounding landscapes. [Read More »](#)



Stories

Stories highlight cultural landscapes under the stewardship of the National Park Service. Our current theme features landscapes that are interwoven with stories of social injustice. Stories are updated on a monthly basis. Check back often. [Read More »](#)



Spaces & Places

Our "Spaces & Places" pages provide a listing of cultural landscapes under the care of the National Park Service. We invite you to explore the pages and discover these special locations for yourself. Perhaps one will inspire you to visit a site first-hand! [Read More »](#)

National Park Service Park Cultural Landscapes Program

www.nps.gov/cultural_landscapes

Also follow us on [Facebook](#), [Tumblr](#), [Twitter](#), [Flickr](#), and [Youtube](#)



What are Cultural Landscapes?



What are Cultural Landscapes?

Any piece of land (large or small) with significance in American history and physical integrity, reflecting the period for which it is significant.



National Mall, Washington, DC



Fort Jefferson, Dry Tortugas National Park, Florida



Adams National Historical Park, Quincy, Massachusetts



Cane River Creole National Historical Park, Natchitoches, Louisiana



Jefferson National Expansion Memorial, St. Louis, Missouri



Bandelier National Monument, New Mexico



Canyon De Chelly National Monument, Arizona



San Antonio Missions National Historical Park, San Antonio, Texas



Historic Orchards in the National Parks

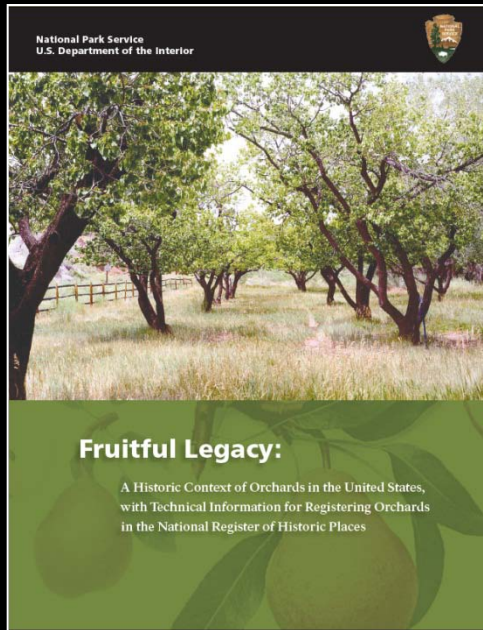


Historic Orchards in the National Parks

- Are found in cultural landscapes
- Approx. 125 of 401 national parks have old fruit trees
- Today: an introduction to some orchards in parks

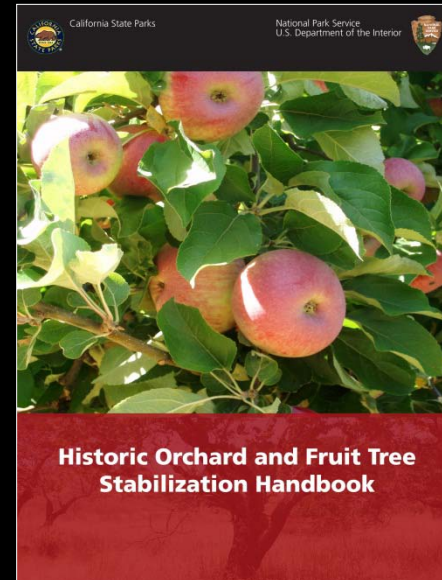


Orchard History



<https://irma.nps.gov/App/Reference/Profile/2174218>

Orchard Stabilization



<https://irma.nps.gov/App/Reference/Profile/2191277>

susan_dolan@nps.gov



Minute Man
National
Historical Park
Concord,
Massachusetts

Image Landsat
Data SIO, NOAA, U.S. Navy, NGA, GEBCO

Google earth



Orchard area within Minute Man National Historical Park, MA



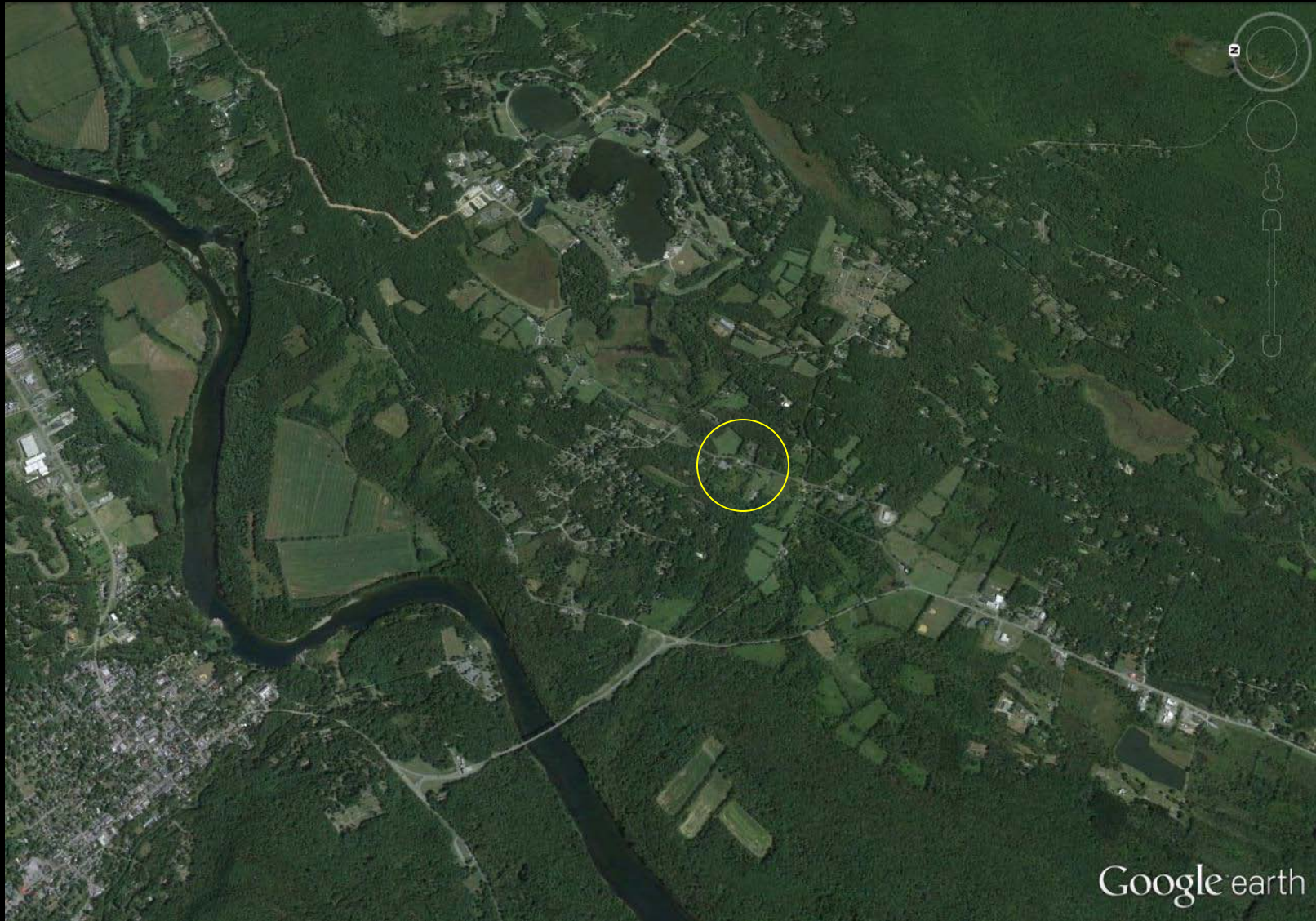
250-Year Old Seedling Apple Trees at Minute Man NHP, MA



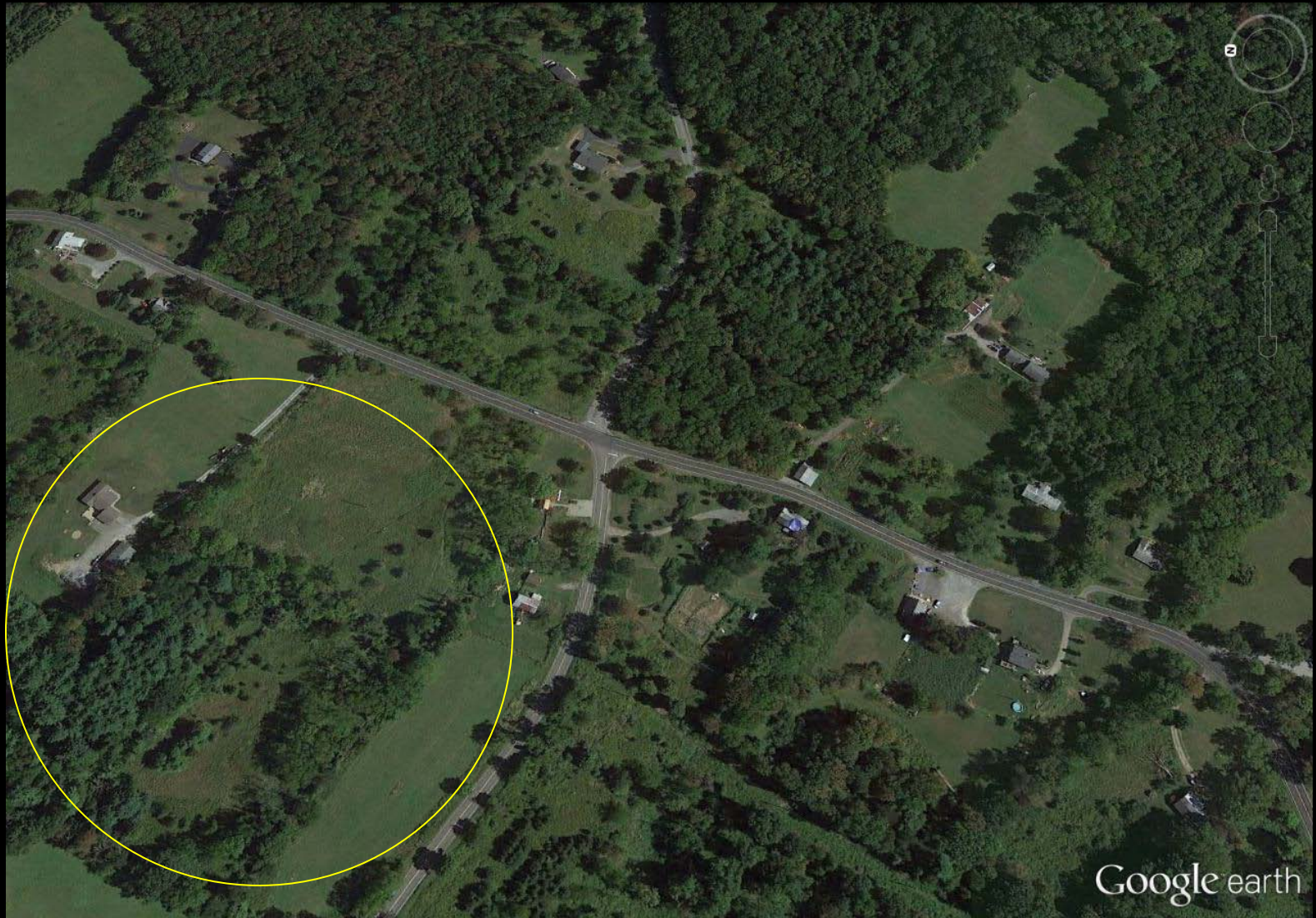
Roberts Farm
Delaware Water
Gap NRA,
New Jersey

Data SIO, NOAA, U.S. Navy, NGA, GEBCO
Image Landsat

Google earth



Roberts Farm at Delaware Water Gap NRA, NJ



Orchard Area at Delaware Water Gap NRA, NJ



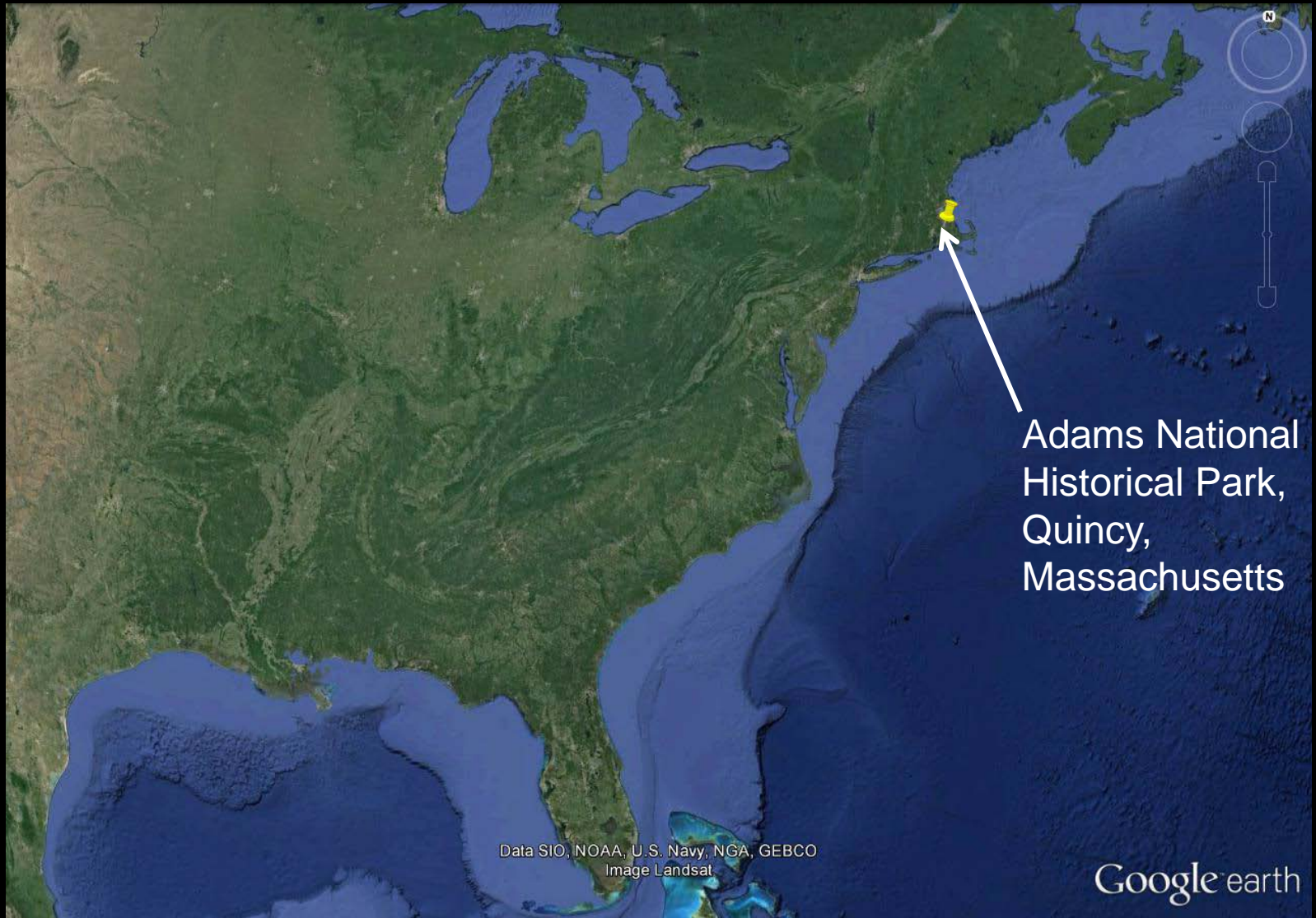
250-Year Old Seedling Apple Trees at Delaware Water Gap NRA, NJ



Deadwood Removal on Seedling Apple Trees at Delaware Water Gap NRA, NJ



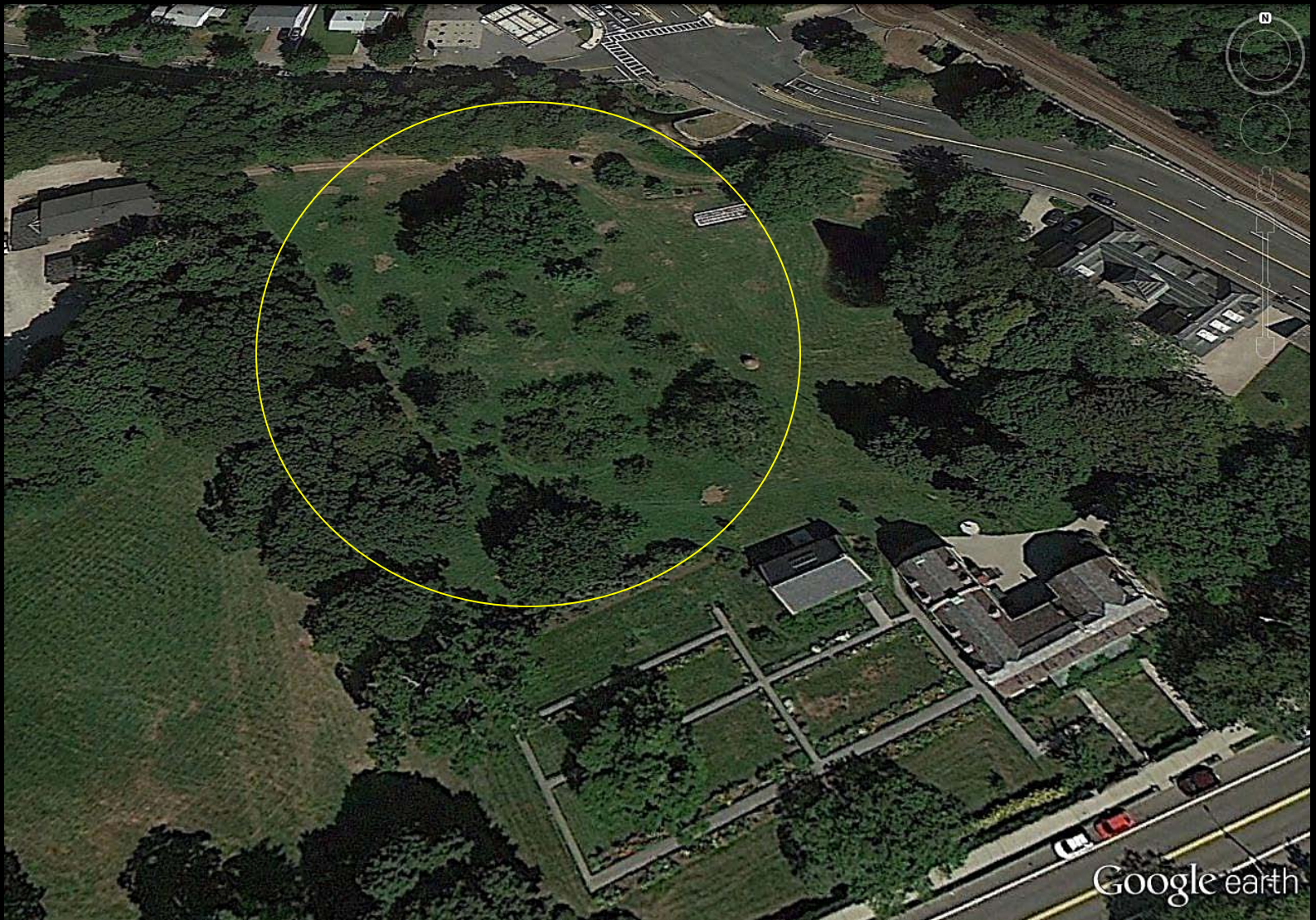
Replacement Clones of 250-Year Old Seedling Apple Trees at Delaware Water Gap NRA



Adams National
Historical Park,
Quincy,
Massachusetts

Data SIO, NOAA, U.S. Navy, NGA, GEBCO
Image Landsat

Google earth



Orchard at Adams National Historical Park, MA



175-Year Old Fruit Trees at Adams NHP, MA



175 -Year Old Fruit Trees at Adams NHP, MA



Lamon (Curry)
Orchard,
Yosemite National
Park,
California

Data SIO, NOAA, U.S. Navy, NGA, GEBCO
Image Landsat

Google earth



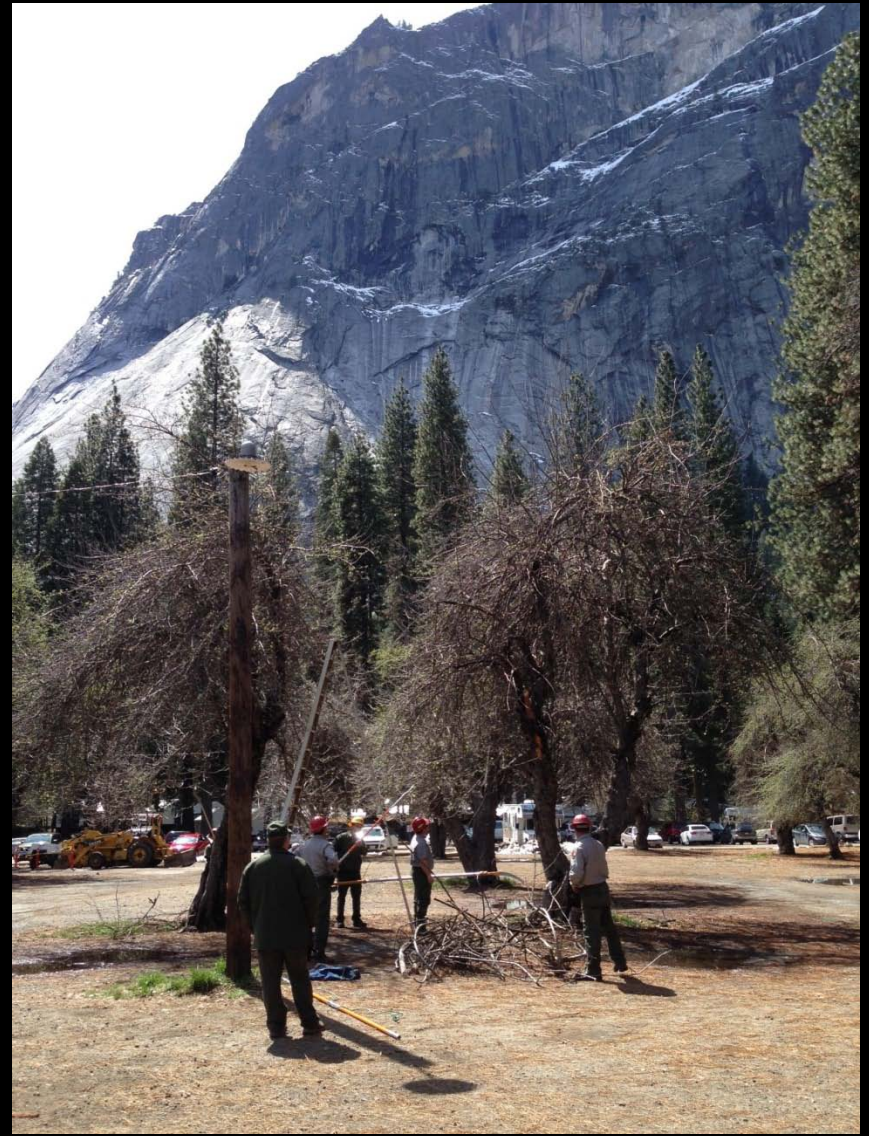
Lamon (Curry) Orchard In Yosemite Valley, Yosemite National Park, CA



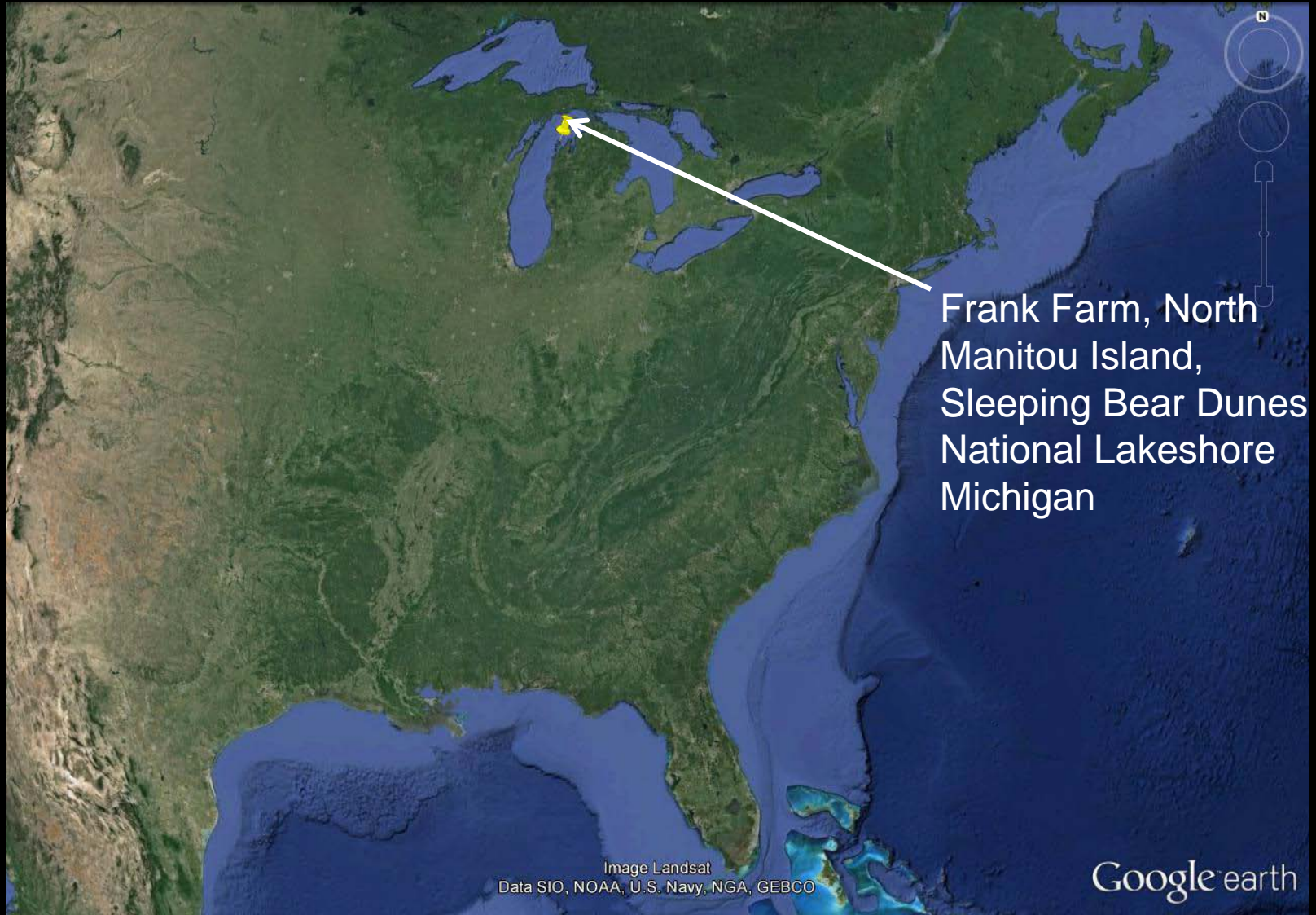
Curry Orchard In Yosemite Valley, Yosemite National Park, CA



165-Year Old Curry Orchard in Yosemite Valley, Yosemite National Park, CA



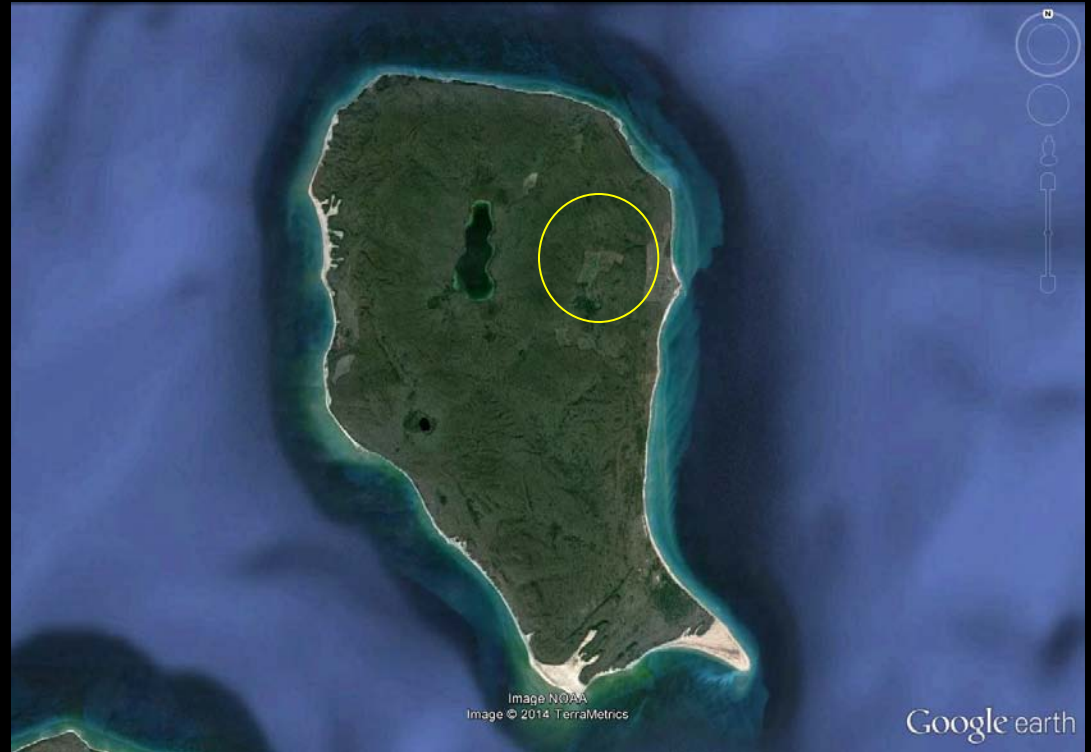
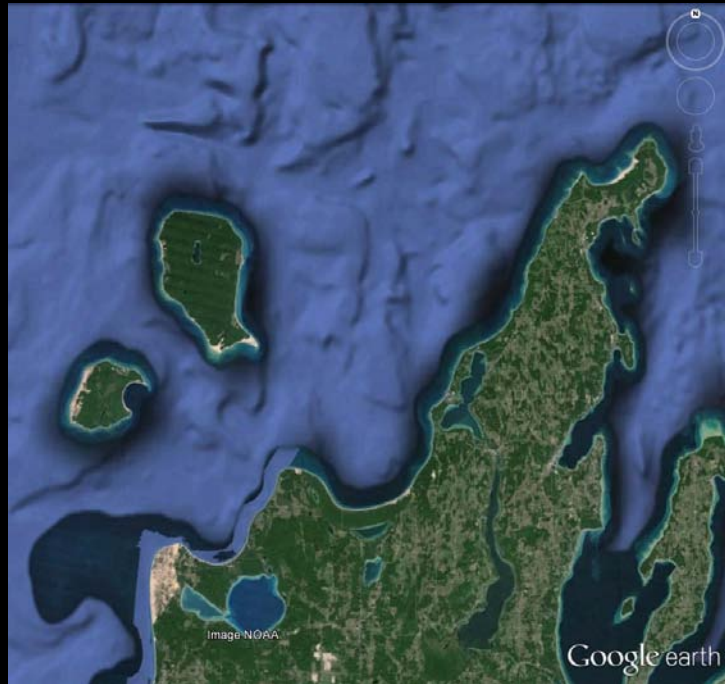
165-Year Old Curry Orchard in Yosemite Valley, Yosemite National Park, CA



Frank Farm, North
Manitou Island,
Sleeping Bear Dunes
National Lakeshore
Michigan

Image Landsat
Data SIO, NOAA, U.S. Navy, NGA, GEBCO

Google earth



North Manitou Island in Sleeping Bear Dunes National Lakeshore, MI



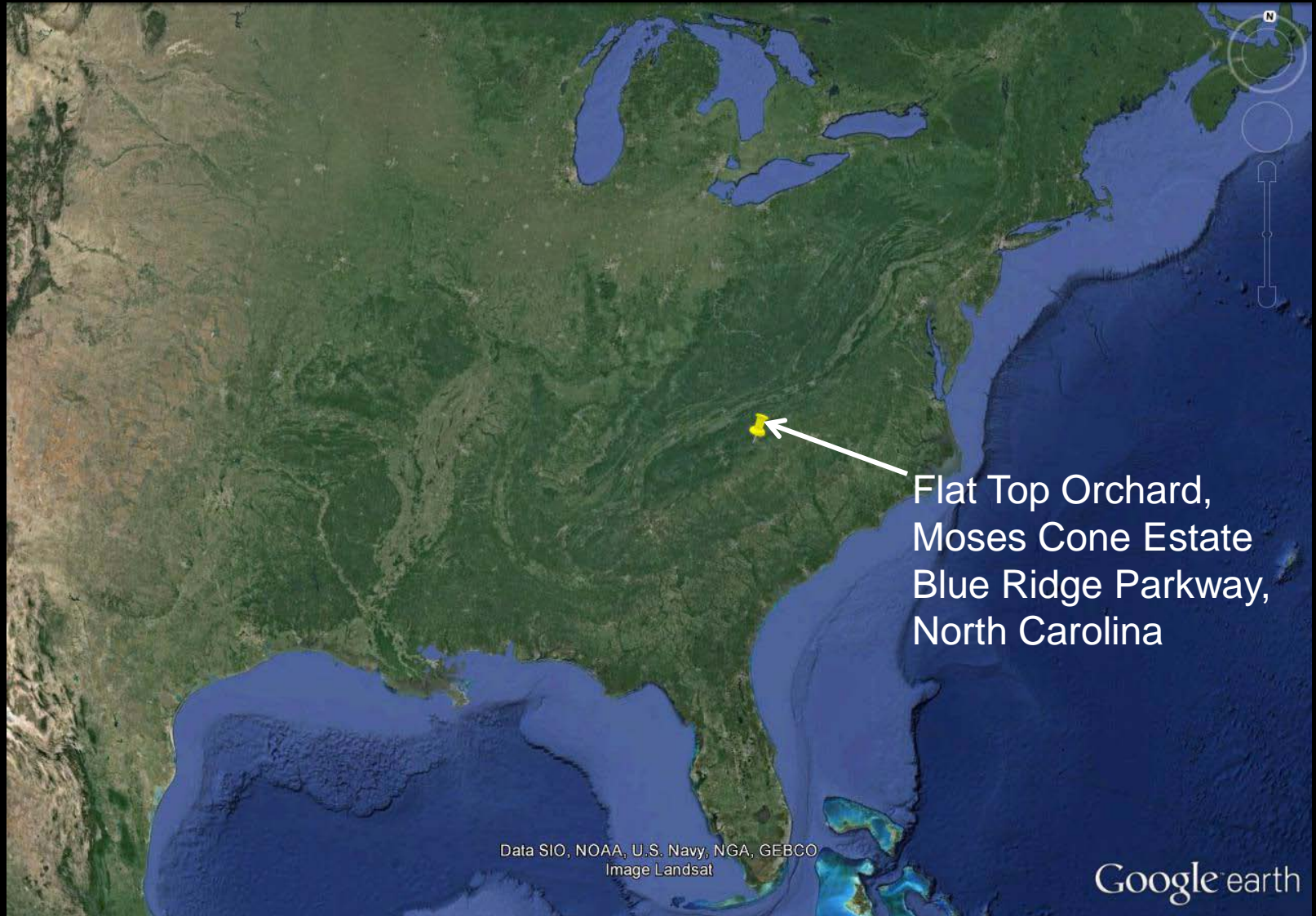
Frank Farm, North Manitou Island, Sleeping Bear National Lakeshore, MI



125-Year Old Apple Trees at Frank Farm, North Manitou Island, MI



125-Year Old Apple Trees at Frank Farm, North Manitou Island, MI



Flat Top Orchard,
Moses Cone Estate
Blue Ridge Parkway,
North Carolina

Data SIO, NOAA, U.S. Navy, NGA, GEBCO
Image Landsat

Google earth



Flat Top Orchard at Moses Cone Estate, Blue Ridge Parkway, NC



115 –Year Old Flat Top Orchard at Moses Cone Estate, Blue Ridge Parkway, NC



115 –Year Old Flat Top Orchard at Moses Cone Estate, Blue Ridge Parkway, NC



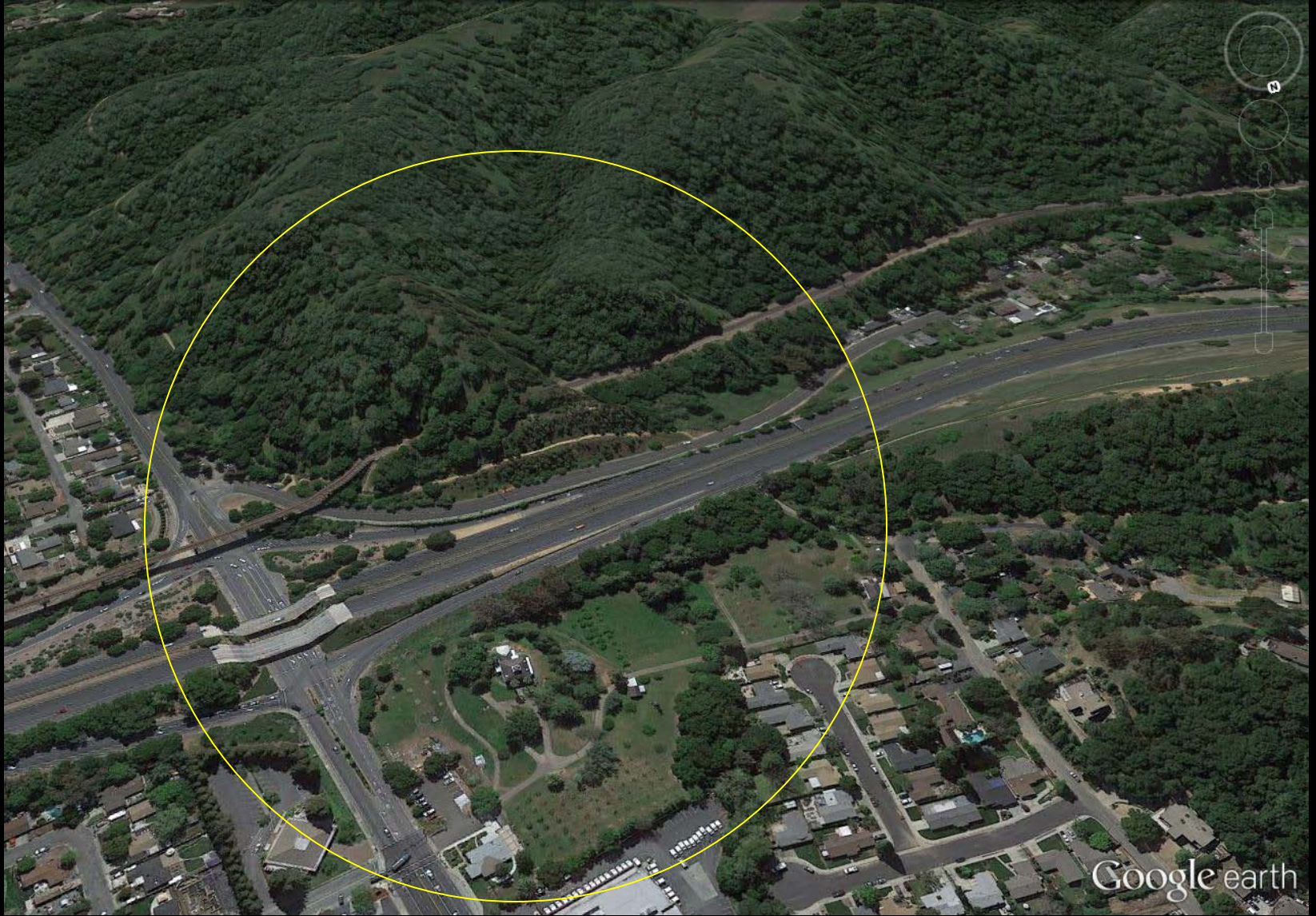
115 –Year Old Flat Top Orchard at Moses Cone Estate, Blue Ridge Parkway, NC



John Muir National
Historic Site,
Martinez,
California

Data SIO, NOAA, U.S. Navy, NGA, GEBCO
Image Landsat

Google earth



Orchard Areas In John Muir National Historic Site, Martinez, CA



Peach, Plum, Apricot and Pear Orchards at John Muir NHS, CA



Recently Replanted Peach Orchard at John Muir NHS, CA



130-Year Old Olive Trees on Mt. Wanda, John Muir NHS, CA



130-Year Old Pear Trees at Muir Gravesite, John Muir NHS, CA



130-Year Old Pear Trees at Muir Gravesite, John Muir NHS, CA



Planting Replacement Clones in Muir Pear Orchard, John Muir NHS, CA



Fruita Historic
District
Capitol Reef
National Park,
Utah

Data SIO, NOAA, U.S. Navy, NGA, GEBCO
Image Landsat

Google earth



Fruita Historic District in Capitol Reef National Park, UT



Google earth

Fruita Historic District in Capitol Reef National Park, UT



Fruita Historic District in Capitol Reef National Park, UT



90-Year Old Apricot and Apple Orchards, Fruita Historic District in Capitol Reef NP



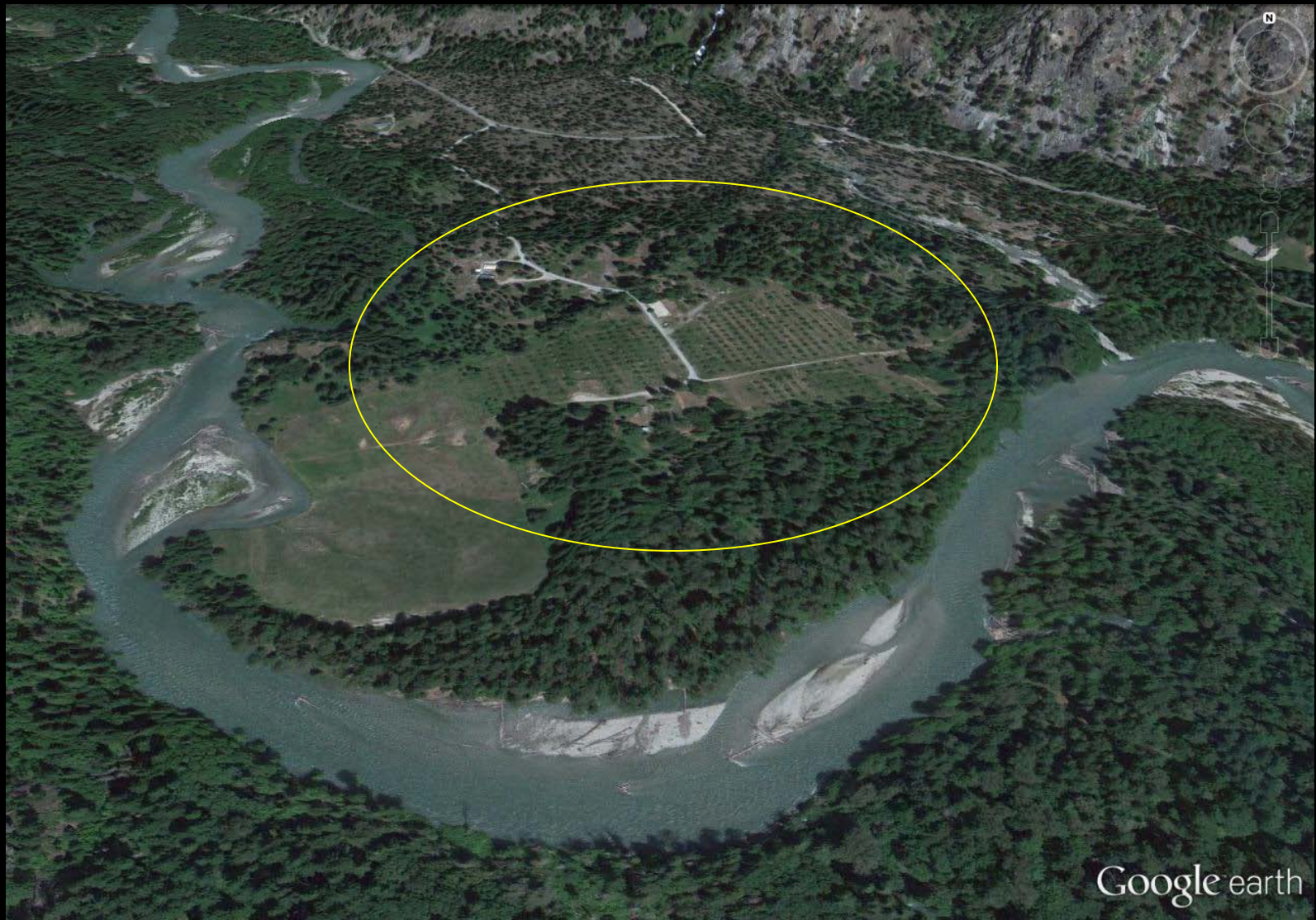
90-Year Old Apple Orchards, Fruita Historic District in Capitol Reef NP



Buckner Orchard
North Cascades
National Park
Stehekin, WA

Data SIO, NOAA, U.S. Navy, NGA, GEBCO
Image Landsat

Google earth



Buckner Orchard, Stehekin, North Cascades National Park, WA



Buckner Orchard, Stehekin, North Cascades National Park, WA



85-Year Old Buckner Orchard in North Cascades NP, WA



85-Year Old Buckner Orchard, Stehekin, North Cascades National Park, WA



85-Year Old Buckner Orchard, Stehekin, North Cascades National Park, WA



85-Year Old Buckner Orchard, Stehekin, North Cascades National Park, WA



85-Year Old Buckner Orchard, Stehekin, North Cascades National Park, WA



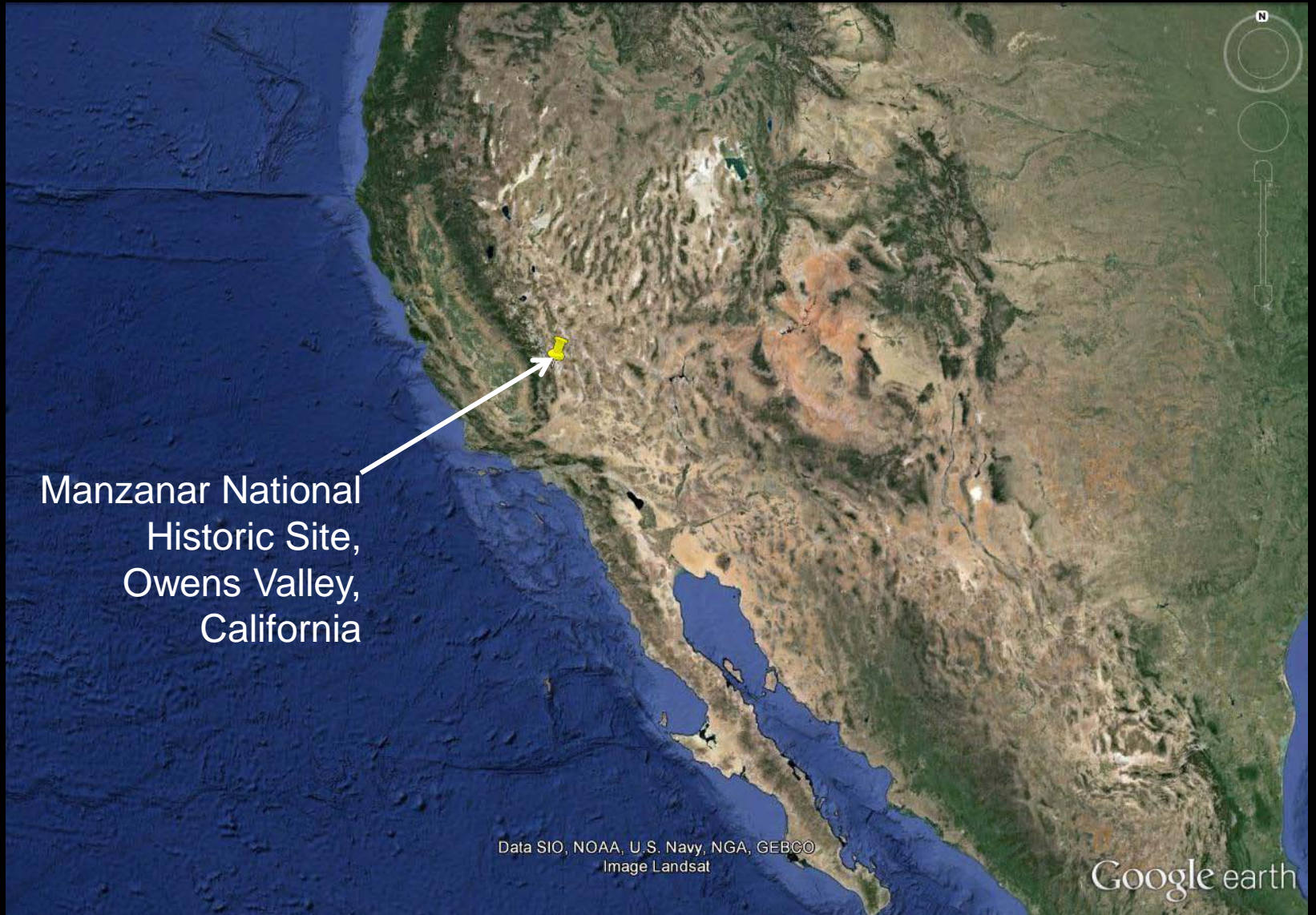
85-Year Old Buckner Orchard, Stehekin, North Cascades National Park, WA



Buckner Orchard, Stehekin, North Cascades National Park, WA



85-Year Old Buckner Orchard, Stehekin, North Cascades National Park, WA



Manzanar National
Historic Site,
Owens Valley,
California

Data SIO, NOAA, U.S. Navy, NGA, GEBCO
Image Landsat

Google earth



Manzanar National Historic Site, near Independence, Owens Valley, CA



Manzanar National Historic Site, near Independence, Owens Valley, CA



80+ Year Old Orchards, Manzanar NHS, Owens Valley, CA



Manzanar Orchard in the 1930s, Owens Valley, CA



Manzanar War Relocation Center, 1943



Japanese-American Internment Camp was laid out around former orchards 1942 - 45



Interment Camp was “beautified” by internees



Interment Camp was “beautified” by internees



Some orchards still remained from the 1930s



Orchards were pruned and irrigated to produce fruit for the camp



Orchards were valued as sources of food



NPS acquired land in 1997. Surviving orchards were in bad condition



National Park Service arborists at work



Devoted NPS staff have saved the remaining trees



Before and After Stabilization of 90-Year Old Orchards at Manzanar NHS, CA



NPS Efforts to Preserve Historic Orchards

- Inventory and document NPS historic orchards
- Provide guidance on orchard history and listing orchards in the National Register of Historic Places
- Provide guidance on stabilizing historic orchards
- Provide guidance on the treatment of historic orchards



Orchard History

National Park Service
U.S. Department of the Interior



Fruitful Legacy:

A Historic Context of Orchards in the United States,
with Technical Information for Registering Orchards
in the National Register of Historic Places

2009

Orchard Stabilization



California State Parks

National Park Service
U.S. Department of the Interior



Historic Orchard and Fruit Tree Stabilization Handbook

2014